



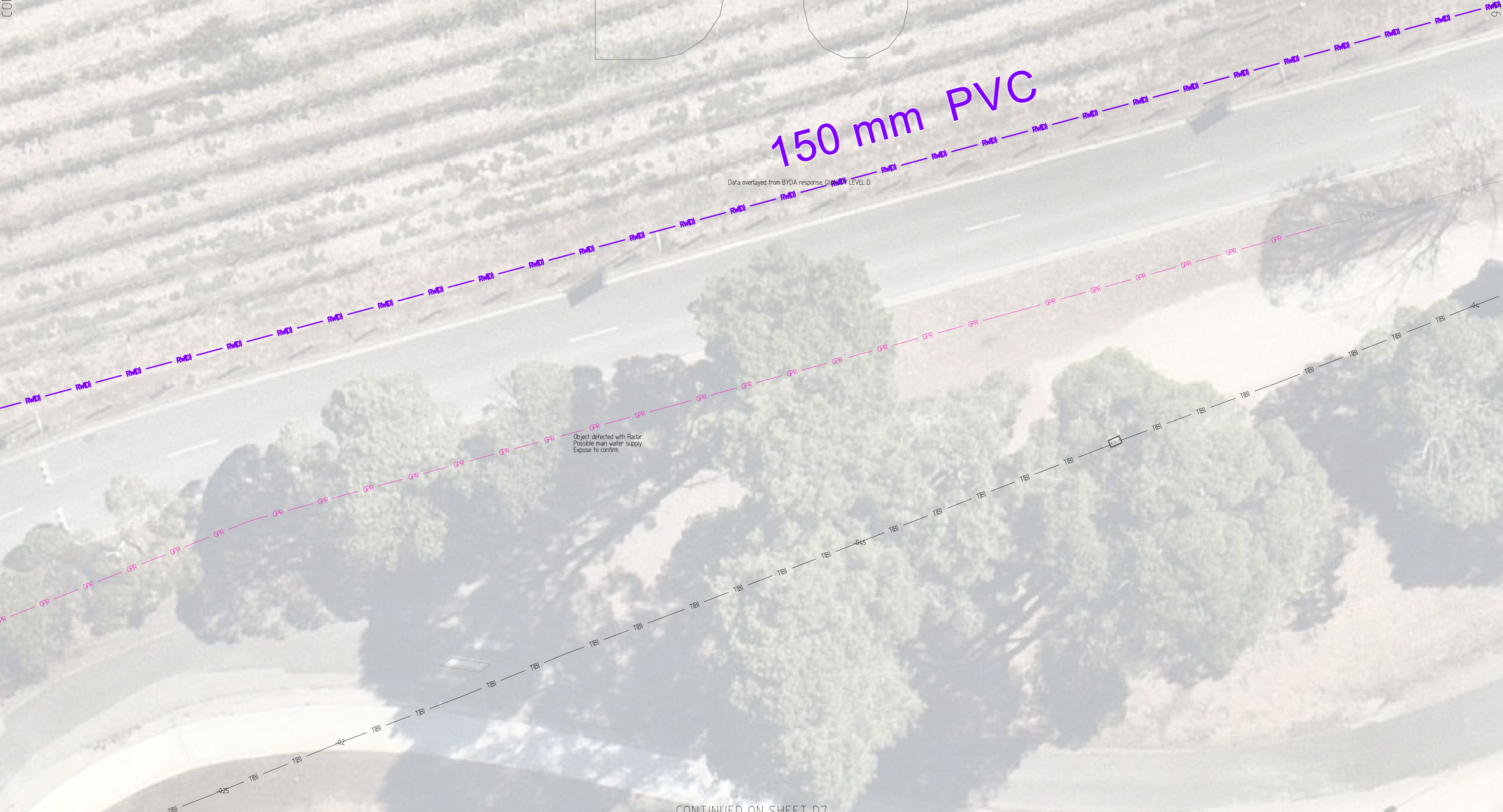
CONTINUED ON SHEET C6

CONTINUED ON SHEET D6



150 mm PVC

Data overlaid from BYDA response D:\MWD LEVEL D



Object detected with Radar: Possible man water supply. Expose to confirm.



POSTAL: PO BOX 401 ROMSEY VIC 3434
EMAIL: JAKE@MRLS.COM.AU
PHONE: 04.03 222 537



WARNING: ACCURACY OF UNDERGROUND SERVICES INFORMATION. UNDERGROUND SERVICES SHOWN ON THIS PLAN HAVE BEEN LOCATED TO THE QUALITY LEVEL INDICATED IN THE LINE TYPE DESCRIPTION. THE LOCATION AND DEPTHS STATED SHOULD BE TREATED AS APPROXIMATE AND CAN ONLY BE VERIFIED VIA PROVEN METHODS (MANUAL EXPOSURE/NON-DESTRUCTIVE DIGGING, G.L.A) OF WHICH UNLESS OTHERWISE AGREED UPON IS THE RESPONSIBILITY OF THE CONTRACTOR. THERE IS NO GUARANTEE ALL SERVICES THAT EXIST IN THE AREA COVERED ON THIS PLAN ARE SHOWN. THIS PLAN DOES NOT REPLACE BEFORE YOU DIG PLANS.

LEGEND table with columns for service types and their corresponding line styles and colors. Includes categories like Communications, Potable Water, Storm Water, and Sewer.

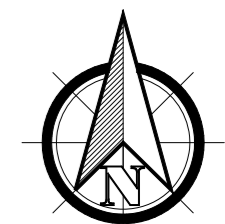
Notes: 1. TRACEABILITY OF SERVICE MATERIAL TYPES... 2. INFORMATION REGARDING UNDERGROUND SERVICE DEPTHS... 3. INFORMATION REGARDING DEPTHS OF STORM WATER AND SEWER PIPES... 4. METHODS OF OBTAINING DEPTHS FOR STORM WATER & SEWER... Includes a detailed explanation of how depth is measured and quality levels are determined.

WARNING: ACCURACY OF UNDERGROUND SERVICES INFORMATION. UNDERGROUND SERVICES SHOWN ON THIS PLAN HAVE BEEN LOCATED TO THE QUALITY LEVEL INDICATED IN THE LINE TYPE DESCRIPTION. THE LOCATION AND DEPTHS STATED SHOULD BE TREATED AS APPROXIMATE AND CAN ONLY BE VERIFIED VIA PROVEN METHODS (MANUAL EXPOSURE/NON-DESTRUCTIVE DIGGING, G.L.A) OF WHICH UNLESS OTHERWISE AGREED UPON IS THE RESPONSIBILITY OF THE CONTRACTOR. THERE IS NO GUARANTEE ALL SERVICES THAT EXIST IN THE AREA COVERED ON THIS PLAN ARE SHOWN.

UNDERGROUND SERVICES (PARTIAL)
SITE ADDRESS
SALESIAN COLLEGE SUNBURY
1 MACEDON ST,
SUNBURY VIC 3429



PROJECTION: MGA2020 MGA_ZONE 55
HEIGHT DATUM: AHD
FIELD WORK: JAKE SUTHERLAND
DRAWN: JAKE SUTHERLAND
DATE: VARIOUS - SEE COVERSHEET



NOTE: This master plan is based on data collected from various surveys conducted across the college over an extended period. While an area may indicate the presence of certain services, it may not necessarily reflect all the services present in that area - there may be additional services not shown. The focus should be on the idea that "this service has been located and mapped," rather than thinking "this area has been scanned."